



## Self-Sustaining Tree

At the top of the EnergyTree there is a real tree which will change depending upon how efficient you are. It will either live or die akin to the rainforest.

## Energy Consumption

As part of the system the EnergyTree will have intelligent recycling bins. That will weight, know how full and communicate when they need emptying.

## Recycling Productivity

The recycling bins will talk to the EnergyTree. It will alert when the bins are full.

As you can't always create enough energy by solar power, you will gain power credit from recycling you waste.

## Household Efficiency

The house will talk with the energy devices and will be able to tell you how efficient you household is.

the EnergyTree  
sustainable computing



### **solar powered**

the energy tree will be powered by a solar panel that will power the whole of the tree.

### **the tree**

Longer term interface

Grows if your effiecnt -- Dies if a energy hog.

# the EnergyTree

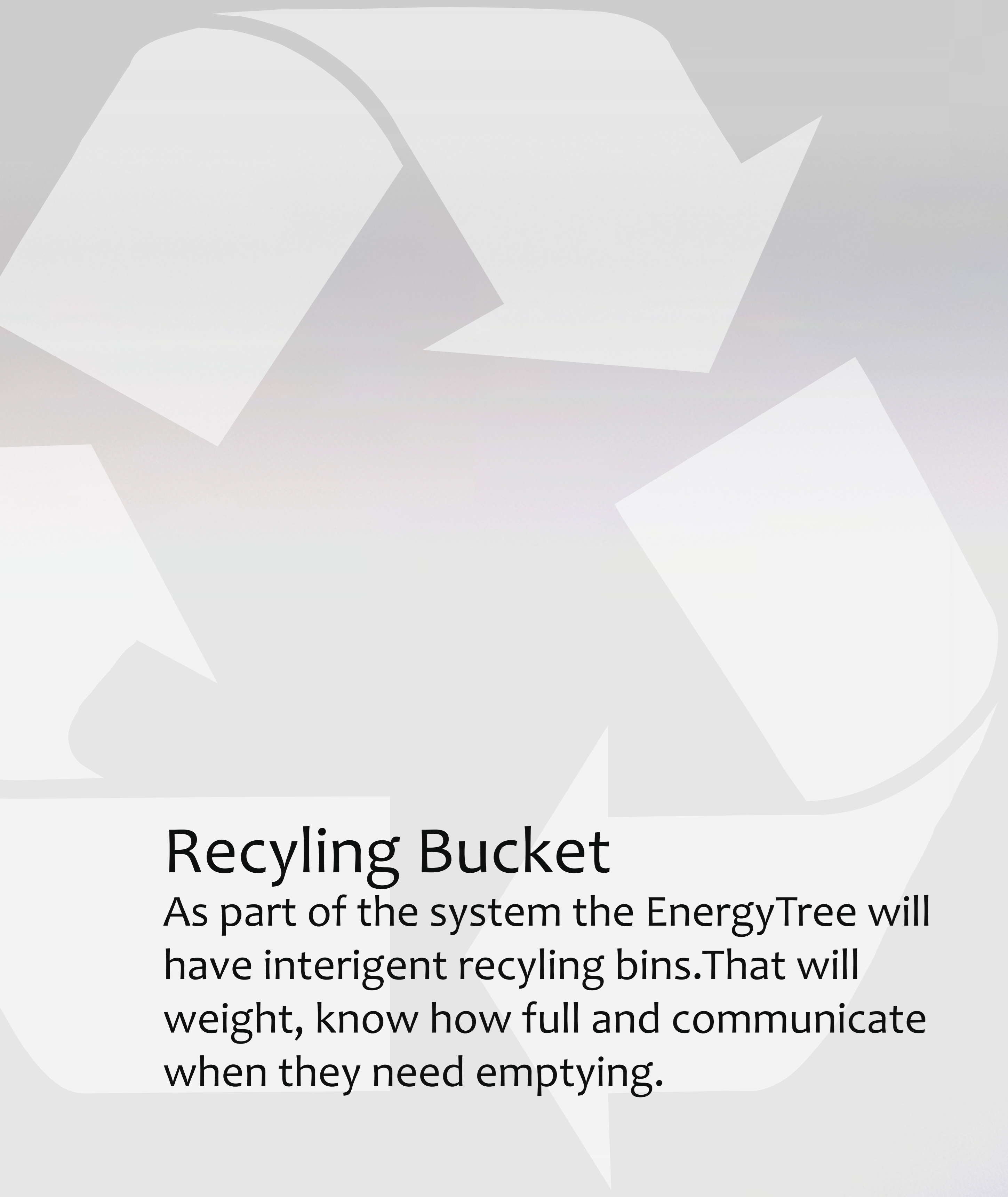
## sustainable computing

### **self supporting tree**

Energy tree is completely self sustainable, These lower compartments are refilled by the user ever 3 months. With water, poison and nutrients.

# the EnergyTree

sustainable computing

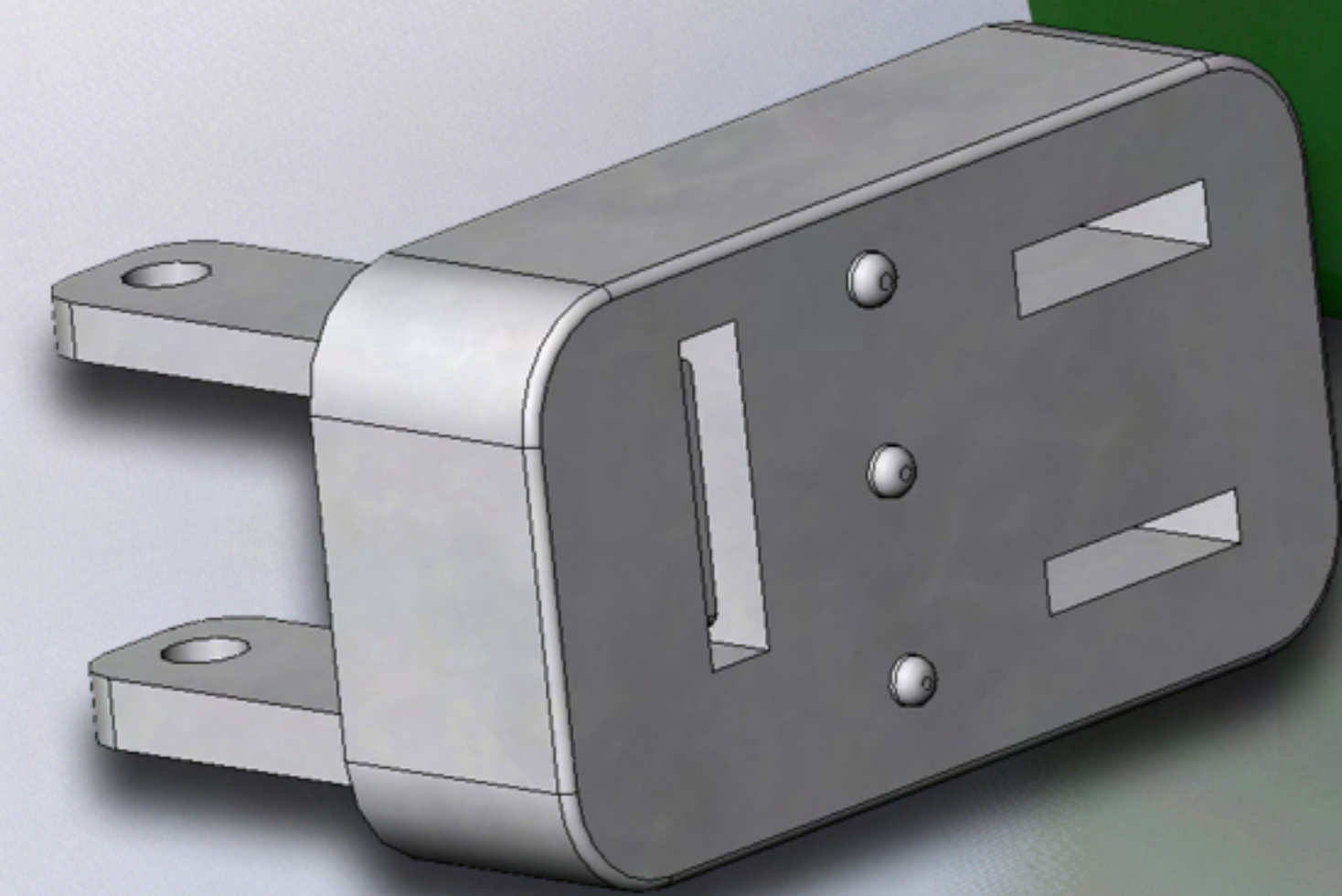


## Recycling Bucket

As part of the system the EnergyTree will have interigent recycling bins. That will weight, know how full and communicate when they need emptying.

## Smart Plugs

smart plugs, will interact with the device. To know when to turn off the power and





## Solar Powered

rear solar panel folds out, with this being the only powersource for the tree.

68% Efficiency  
Become more effiecnt

the EnergyTree  
sustainable computing

## SelfGrowing Tree

The user will be required to fill draws up every three months to keep the EnergyTree deciding how it should treat the real tree.